

# CERTIFICATE OF LOCATION OF GOVERNMENT CORNER

Northeast \_\_\_\_\_ Corner of Section 15, Township 106, Range 41, 5th P.M.

STATE OF MINNESOTA, County of Murray

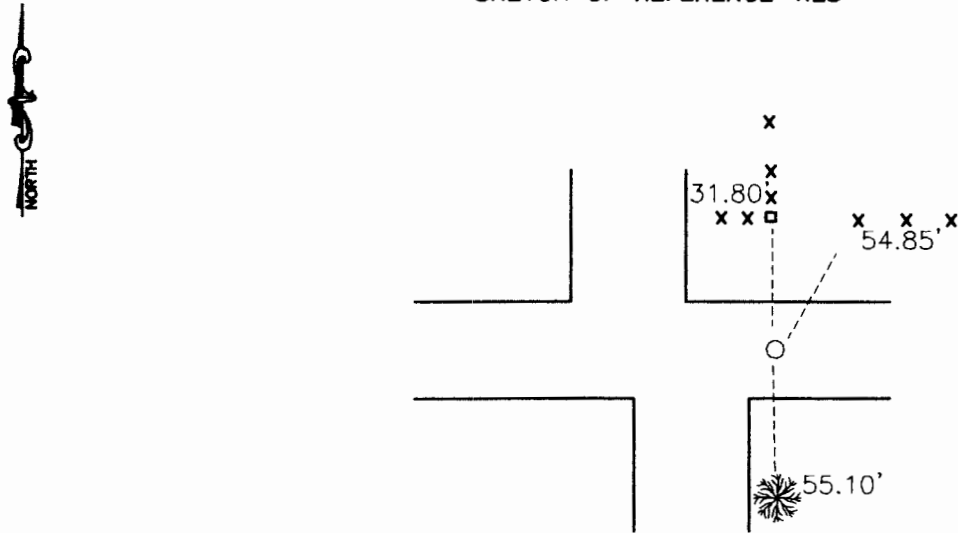
At the corner location shown on the sketch:

On May 4, 1992 found a smooth 1/2" pointed iron stake (see back)  
DATE

left monument as found,  lowered monument,  removed monument (explain)

On May 4, 1992 placed a 5/8" iron over existing iron stake  
DATE

### SKETCH OF REFERENCE TIES



Nail and seal in top of corner fence post - NE 54.85'  
Nail and seal in corner stone post - N 31.80'  
Nail and seal in 18" silver maple tree - S 55.10'

Statement of evidence relative to this corner location is on back of page.

I hereby certify that this document and the data contained herein was prepared by me or under my direct supervision.

Lyle C. Moser 3-24-98  
SIGNATURE DATE

Registration No. 11943

- Land Surveyor,  Professional Engineer
- County Surveyor,  County Engineer

OFFICE OF THE COUNTY RECORDER  
County of \_\_\_\_\_

I hereby certify that this document was filed in the Co. Recorders office at \_\_\_\_\_ .M on the \_\_\_\_\_ day of \_\_\_\_\_ A.D. 19 \_\_\_\_\_

County Recorder \_\_\_\_\_  
By \_\_\_\_\_, Deputy

DOCUMENT NO. \_\_\_\_\_

### Statement of Evidence

On May 4, 1992, Moseng Land Surveying dug with a jack hammer. The hole was 5' deep and at 3' down was the old road bed. Closer to the surface at 12" to 18" we found 3 P.K. nails, one bridge spoke and a smooth 1/2" iron stake 8" long. We left the iron and nails and set a 5/8" iron stake at road surface over iron.